

TSC910-18F-001 CONTROLLER
USER GUIDE

INTERNAL APPROVALS		
Product Manager	Engineering	Document Control

PROCEDURE

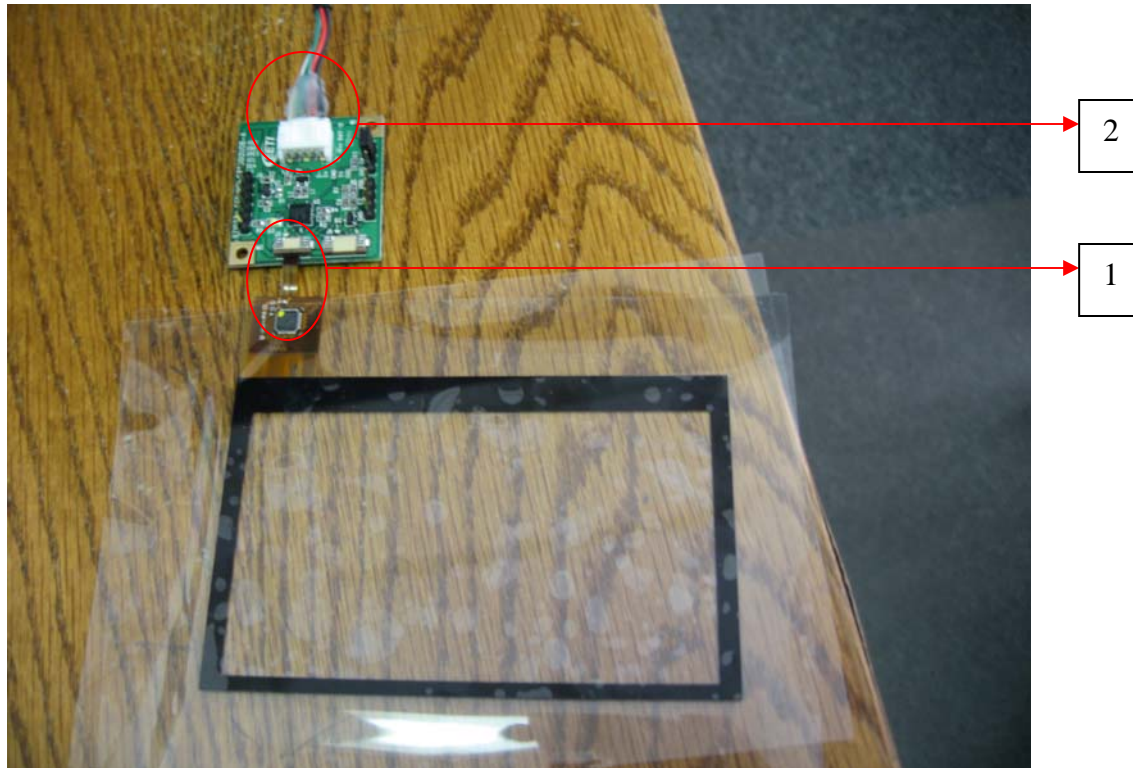


Fig 1. DTS413-0430-0FX-000 connected to 6 Pin connector of TSC910-18F-001.

1. Connect the Touch Panel Pin-out cable to the corresponding pin connector on the controller. The Pin-out connections vary depending on the type of touch panel as listed below.
DTS413-0280-XXX & DTS413-0320-XXX – 9-Pin Connector
DTS413-0350-XXX & DTS413-0430-XXX – 6-Pin Connector
2. Connect the one end of the USB extension cable (TSCC-1E-000) to the controller as shown.
3. Insert the other end to the USB port on your computer.
4. Download and install drivers for the TSC910 controllers from the Densitron website <http://www.densitron.com/content.aspx?id=538> while the controller is plugged in.
5. On installation, skip the Calibration process as it is not required. The Touch kit software should detect the presence of a USB Touch controller. (A Beep sound or mouse movement on touching the touch panel indicates the detection of the controller). If not, remove the USB cable and put it back to the same port for which the controller drivers were installed. (Other ports will not detect the controller)
6. Click on the “Tools” Tab and execute the “Draw Test”.
7. When you touch and move over the touch panel, it should appear on the computer screen as shown below.

Product No.	TSC910-18F-001	REV. 1.0
-------------	----------------	----------

Page	2 / 5
------	-------

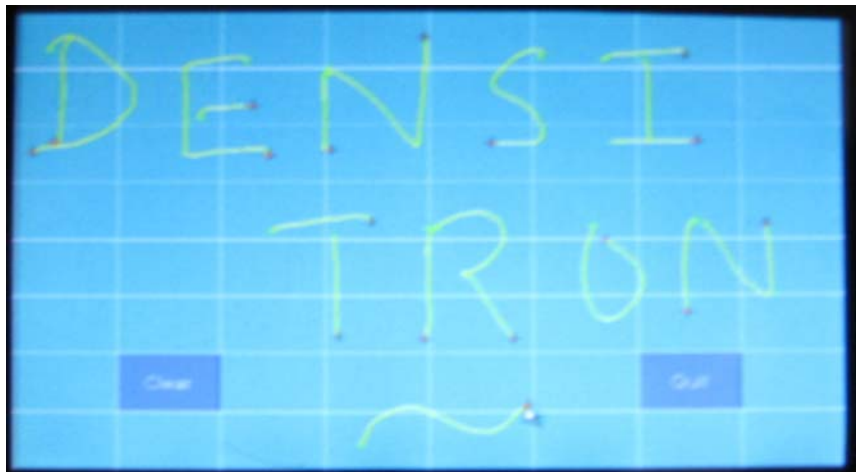
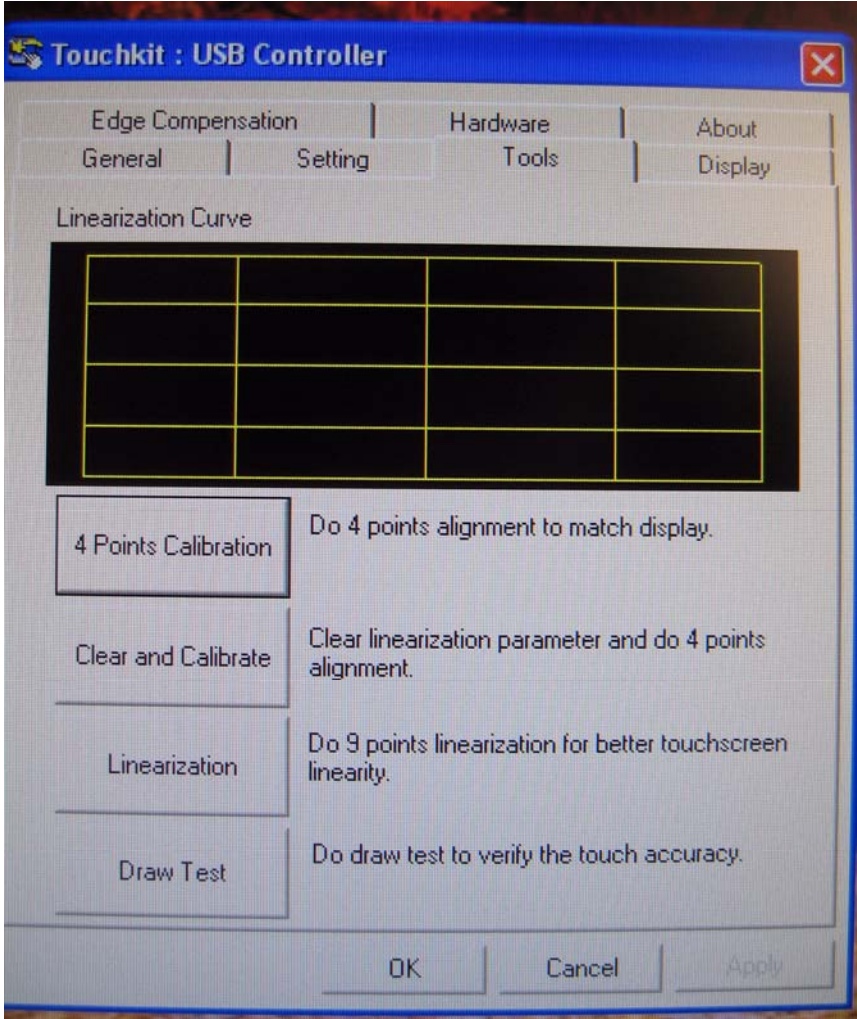
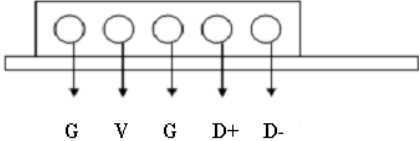
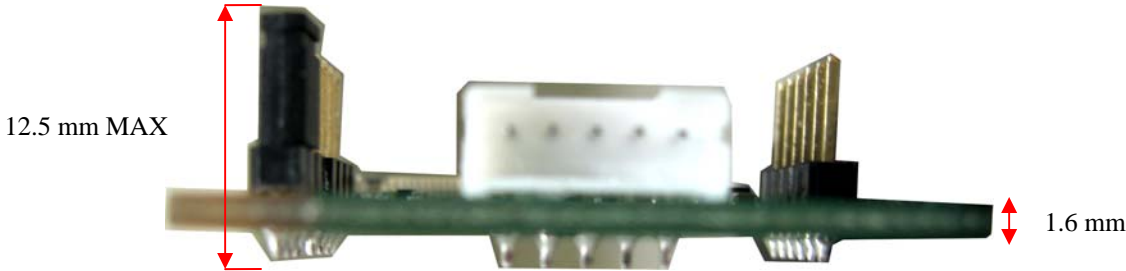
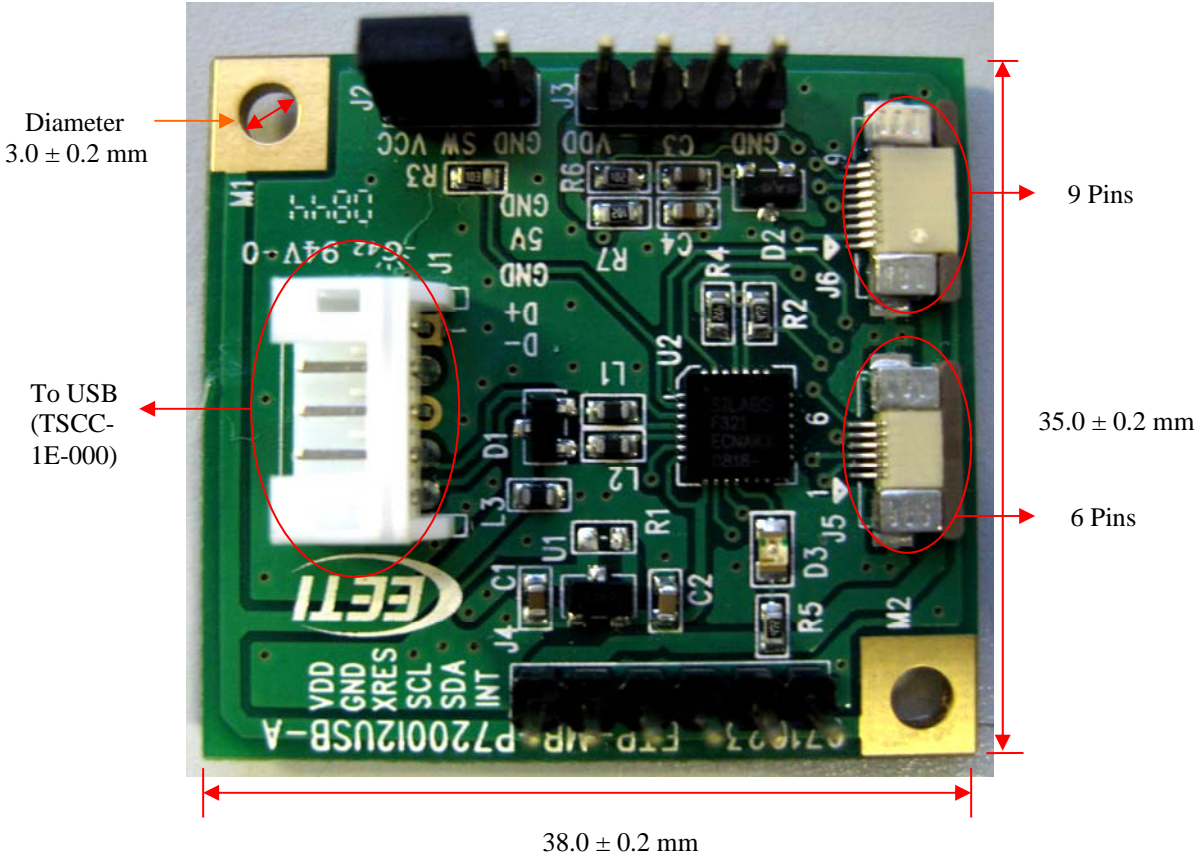
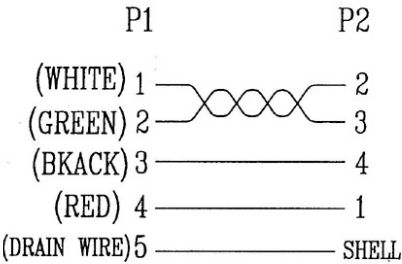
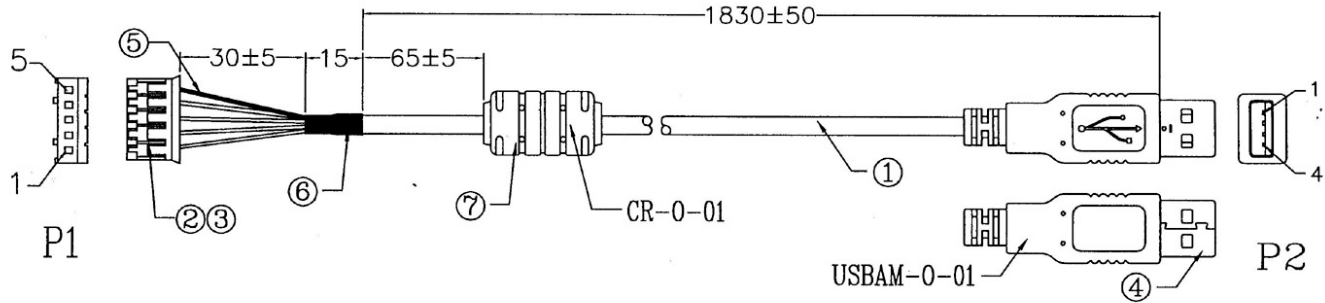


Fig. 2. Draw Test

TSC910-18F-001 CONTROLLER BOARD



TSCC-1E-000 USB EXTENSION CABLE



7	CORE	1	PCS	RH 12(OD)*5.6(D)*L20MM
6	TUBE	1	PCS	ø5.0*L15MM
5	TUBE	1	PCS	ø1.0*L40MM
4	CONN.	1	SET	USB "A" TYPE MALE
3	TERMINAL	5	PCS	2.0 (JS-1124-T)
2	HOUSING	1	PCS	H.S 5PIN PITCH:2.0 COLOR:WHITE(JS-1124-05)
1	CABLE	1880	mm	UL2725 28AWG*1P+24AWG*2C+AEB JACKET:PVC BEIGE OD:ø4.7MM (ALL VENDER UL2725 APPROVED)
NO. PART NO. QTY UNITS				DESCRIPTION