


1RU Ready HMI Engine

19" Full Rack Ready

Product Specification

Customer	Standard		
Product Number	DMT132YYHLCMU-1D		
Customer Part Number			
Customer Approval		Date:	

Internal Approvals

Product Mgr	Doc. Control	Electr. Eng.
Bazile Peter	Kadafi Ali	Filip Kaczorowski
Date: 2019/03/30	Date: 2019/03/27	Date: 2019/03/23

Revision Record

Rev.	Date	Page	Chapt.	Comment	ECR no.
A	2019-03-27	--	--	Preliminary	

PRE

Table of Contents

1.0 GENERAL DESCRIPTIONS	4
1.1 Introduction	4
1.2 Main Features	4
1.3 Scanning Frequency	5
1.4 Input Resolution [USB]	5
1.5 Input/Output Signal	5
1.6 User Controls	5
1.7 Key Button Function	6
2.0 MECHANICAL SPECIFICATION	7
2.1 Mechanical Characteristics	7
2.2 Mechanical Drawing	8
2.3 Product Picture	9
2.4 Block Diagram	10
3.0 ELECTRICAL SPECIFICATION	11
3.1 Power consumption	11
4.0 TIMING AND OPERATING SYSTEMS	12
4.1 Timing characteristics	12
4.2 Operating systems	12
5.0 OPTICAL SPECIFICATION	13
5.1 Optical Characteristics	13
6.0 ENVIRONMENTAL SPECIFICATION	13
6.1 Environmental Characteristics	13

1.0 General Descriptions

1.1 Introduction

This industrial TFT-LCD monitor is a high performance TFT LCD monitor for rack mount products and provides a high image from the USB B Type Interface.

1.2 Main Features

Item	Contents
Screen Size	2 x 6.6" Diagonal
Display Format	2 x 1440(H) x RGB x 240 (V) dots
Colour	16.7M
Overall Dimensions	482.6 (W) × 44.0 (H) × 24.1 (D) mm
Active Area	344.06 mm (H) x 27.36 mm (V)
Pixel Pitch	0.114 (H) x 0.114 (V)
Viewing Angle	L/R: 160°(Typ.) U/D: 160° (Typ.)
Contrast Ratio	800: 1 (Typ.)
Brightness	750 CD/m2
I/O	3 x USB (B Type)
Backlight	LED
Mechanism	Durable Metal Case
Plug & Play	USB DisplayLink
Response time	25 msec
Touch Panel	PCT
Touch Interface	USB
Operating temperature	-10°C ~ +60°C
Storage temperature	-10°C ~ +60°C

1.3 Scanning Frequency

Item	Contents
Horizontal	31.5 ~ 80KHz
Vertical	50 ~ 75Hz

1.4 Input Resolution [USB]

Item	Contents
Recommended Resolution	2x 1440 x 240@ 60Hz
Supported Input Resolution	2 x 1440 x 240@ 60Hz

1.5 Input/Output Signal




Item	Contents
USB x 1 USB x 2	Connected to PC for TFT, PCAP Additional USD devices (like knob)

1.6 User Controls

Item	Contents
Key Button	2x 3 Keys
Rotary Knob (Optional)	1 Knob

1.7 Key Button Function



Button	Function
Power	Turns On/Off the Backlight
Up	Adjust Brightness
Down	Adjust Brightness

Preliminary

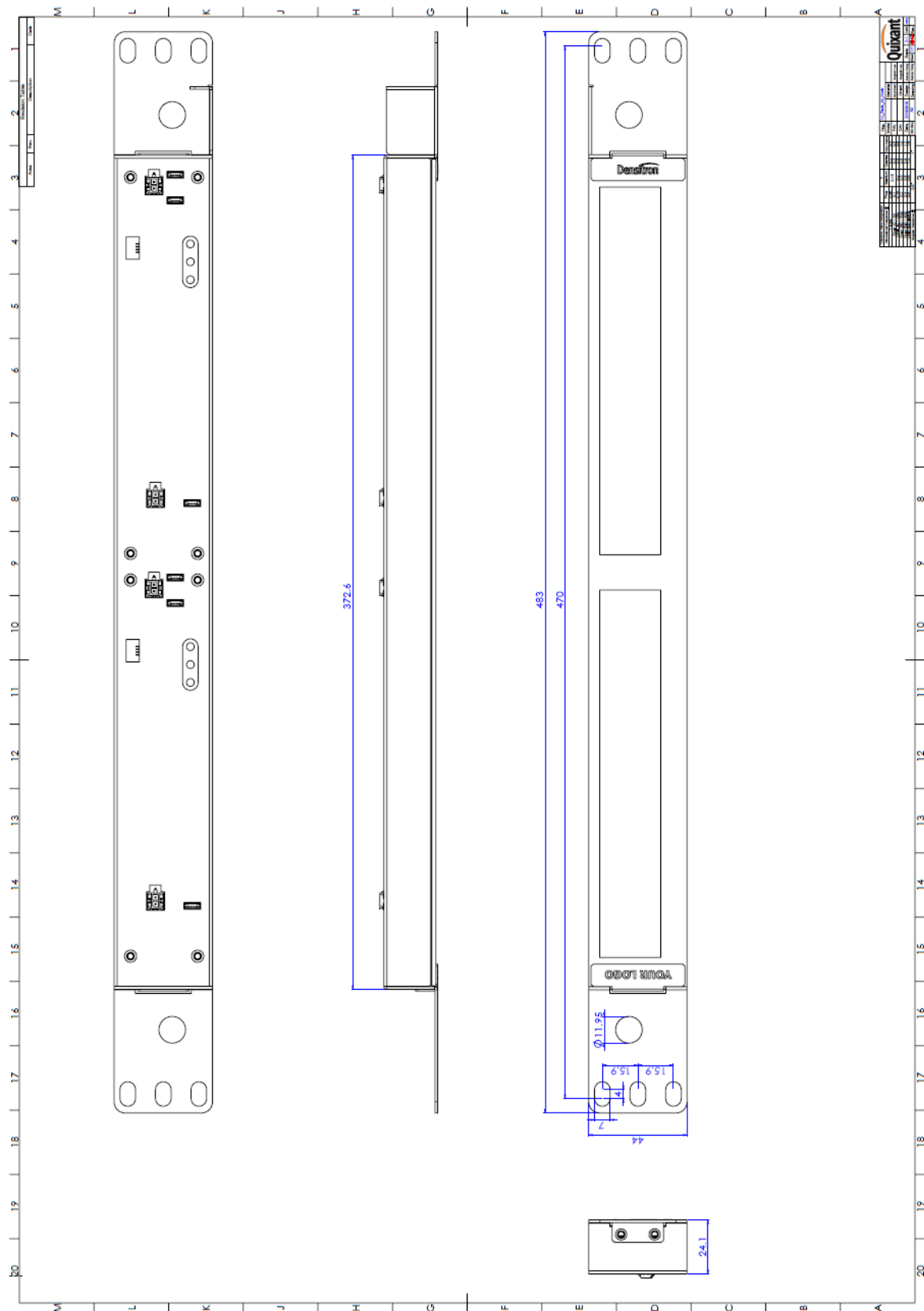
2.0 Mechanical Specification

2.1 Mechanical Characteristics

Item	Characteristic	Unit
Display Format	2880(H) x 240(V)	Dots
Overall Dimensions	482.0 (W) × 44.0 (H) × 24.1 (D) mm	mm
Active Area	344.06 (H)) x 27.36 (V)	mm
Display colour	16.7M	
Weight	660	g

Preliminary

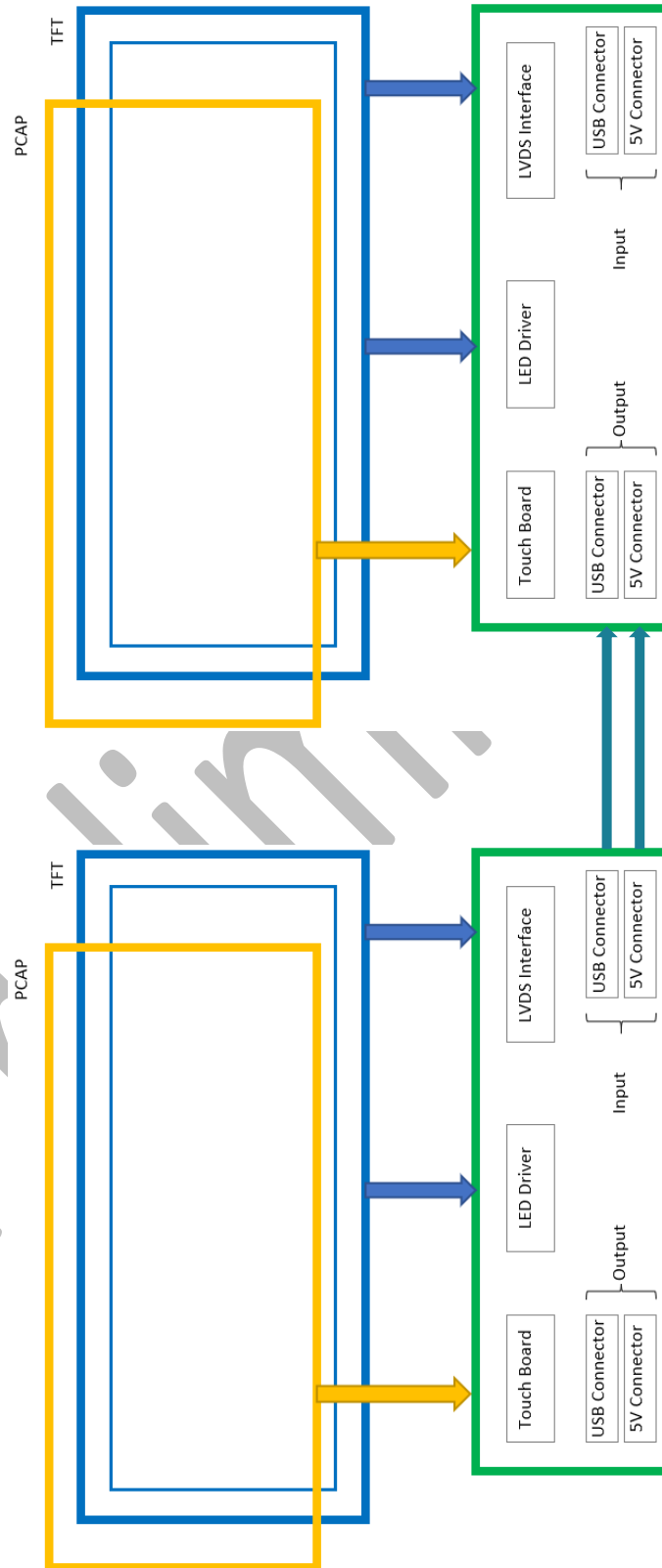
2.2 Mechanical Drawing



2.3 Product Picture



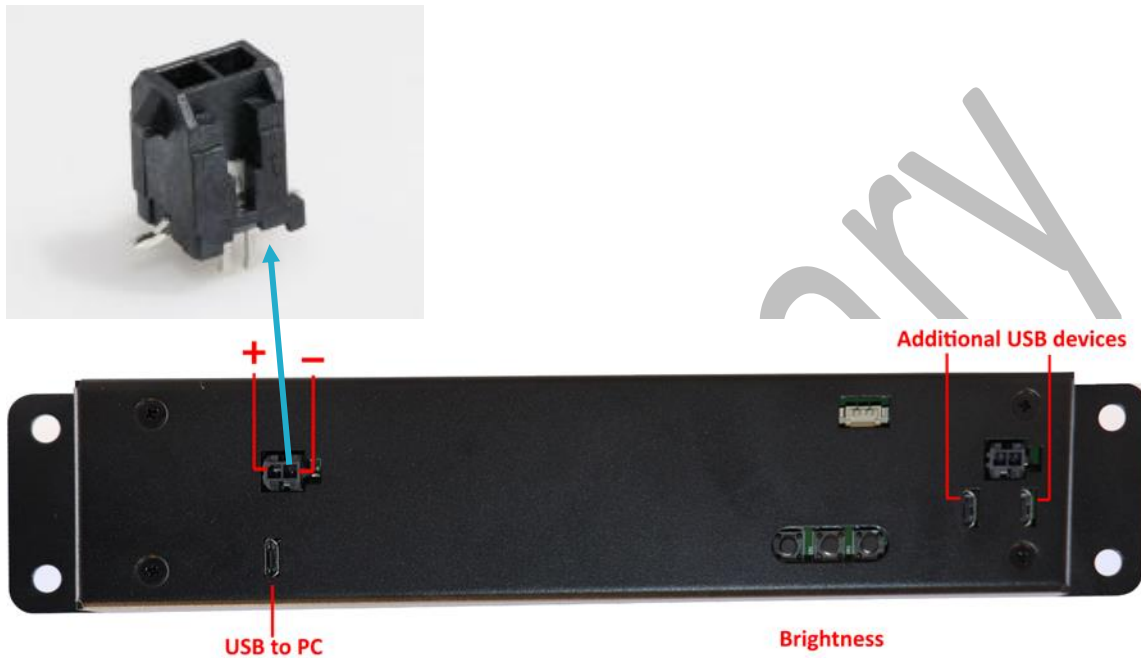
2.4 Block Diagram



3.0 Electrical Specification

3.1 Power consumption

Molex 430450215



Item	Remark
Normal Input Voltage Range	5V DC \pm 10%
Power Connector	Molex 430450215
Power Consumption	11W Max

Cable side mating recommendation:
 Micro-Fit Receptacle housing Molex 43025 series.
 Micro-Fit Female crimp terminals: Molex 43030-series.

4.0 Timing and Operating systems

4.1 Timing characteristics

PC/DVI/HDMI Signal resolution (DTV)

No.	Resolution	V-freq.(Hz)	Proposed
1	720*480	60.00	SDTV 480p
2	720*576	50.00	SDTV 576p
3	1280*720	50.00	HDTV 720p 50Hz
4	1280*720	60.00	HDTV 720p 60Hz
5	1920*540	60.00	HDTV 540p 60Hz

PC/DVI/HDMI Signal Resolution (PC)

No.	Resolution	V-freq.(Hz)	Proposed
1	640*480	60.00	
2	800*600	56.00	
3	800*600	60.00	
4	1024*768	60.00	
5	1280*1024	60.00	
6	1280*768	60.00	
9	1920*540	60.00	

4.2 Operating systems

Here under are listed the minimum configuration requirement.

Operating Systems	Driver Requirement for TFT	Driver Requirement for PCP
Windows 7 and above	Native	Required
Linux Ubuntu 16.4 and above	Native	Required

Please refer to user manual for more details about the operation.

5.0 Optical Specification

5.1 Optical Characteristics

Characteristics	Symbol	Conditions	Min.	Typ.	Max.	Unit
Brightness	L _{br}		-	750	-	cd/m ²
Dark Room Contrast	CR		-	800:1	-	
View Angle			-	160	-	degree

6.0 Environmental Specification

6.1 Environmental Characteristics

Item	Remark
Operating Temperature	-10°C ~ +60°C
Storage Temperature	-10°C ~ +60°C
Storage Humidity	5~90% RH
Operating Humidity	5~90% RH