


MONITOR DISPLAY MODULE

Product Specification

Customer	Standard		
Model Number	Densitron Monitor		
Ordering Part Number	DM-133BD-OP8R02	Open frame, PCT	
	DM-133BD-MP8R02	Closed Frame, PCT	
	DM-133BD-OG8R02	Open frame, Cover glass	
	DM-133BD-MG8R02	Closed frame, Cover glass	
Customer Approval		Date:	

Internal Approvals

Product Mgr.	Doc. Control	Electr. Eng.
Bazile Peter	Filip Kaczorowski	Filip Kaczorowski
Date: 10/08/2018	Date: 10/08/2018	Date: 10/08/2018



Revision Record

Rev.	Date	Page	Chapt.	Comment	ECR no.
A	10/08/2018	--	--	Preliminary	
B	12/01/2019			Additional information 10 finger touches Backlight life time	
C	01/04/2019			Typing error DC Jack connector	



Table of Contents

1.0 GENERAL DESCRIPTIONS	4
1.1 Main Features	4
1.2 Touch	4
1.3 Power Rating	5
1.4 User Controls	5
1.5 Key Button Function	5
2.0 DRAWINGS	6
2.1 Closed frame Panel Drawing	6
2.2 Open frame panel Drawing	7
3.0 ENVIRONMENTAL SPECIFICATION	8
3.1 Environmental Characteristics	8
4.0 OPTICAL CHARACTERISTICS	8
5.0 PART NUMBER CLASSIFICATION	9
5.1 Standard Touch PMOLED Part Number	9

1.0 General Descriptions

1.1 Main Features

Item	Contents
Screen Size	13.3"
Display Format	1920(H) x 1080(V)
Colour	16.7M
Active Area	698.400 (W) x 196.425 (H) mm
Open frame Outline dimensions	343.3(W) x 219.3(H) x 39.5(D) mm
Closed frame Outline dimensions	372.9(W) x 250.9(H) x 38.0(D) mm
VESA Mount	100/100
Viewing Angle	L/R: 178° U/D: 178°
Contrast Ratio	800: 1 (Typ.)
Brightness	400 cd/m2 (320 cd/m2 Min.)
LED backlight life time	50K hr half life
I/O	1x DVI-D port, 1x DP, 1x USB Type B, 1x DC in
Operating temperature	0°C ~ +50°C
Storage temperature	-20°C ~ +60°C

1.2 Touch

Item	Contents
Touch Type	PCT Touch
Touch Point	Multi-Touch (10 finger touches)
Interface	USB Type B
OS Support	Win7 (HID supported)

1.3 Power Rating

Item	Contents
Power Consumption	20 Watt (Typ.)
DC input	12Vdc or 24Vdc
Power connector	DC Jack Connector

1.4 User Controls

Item	Contents
OSD Key Button	5 Key
OSD Language	English

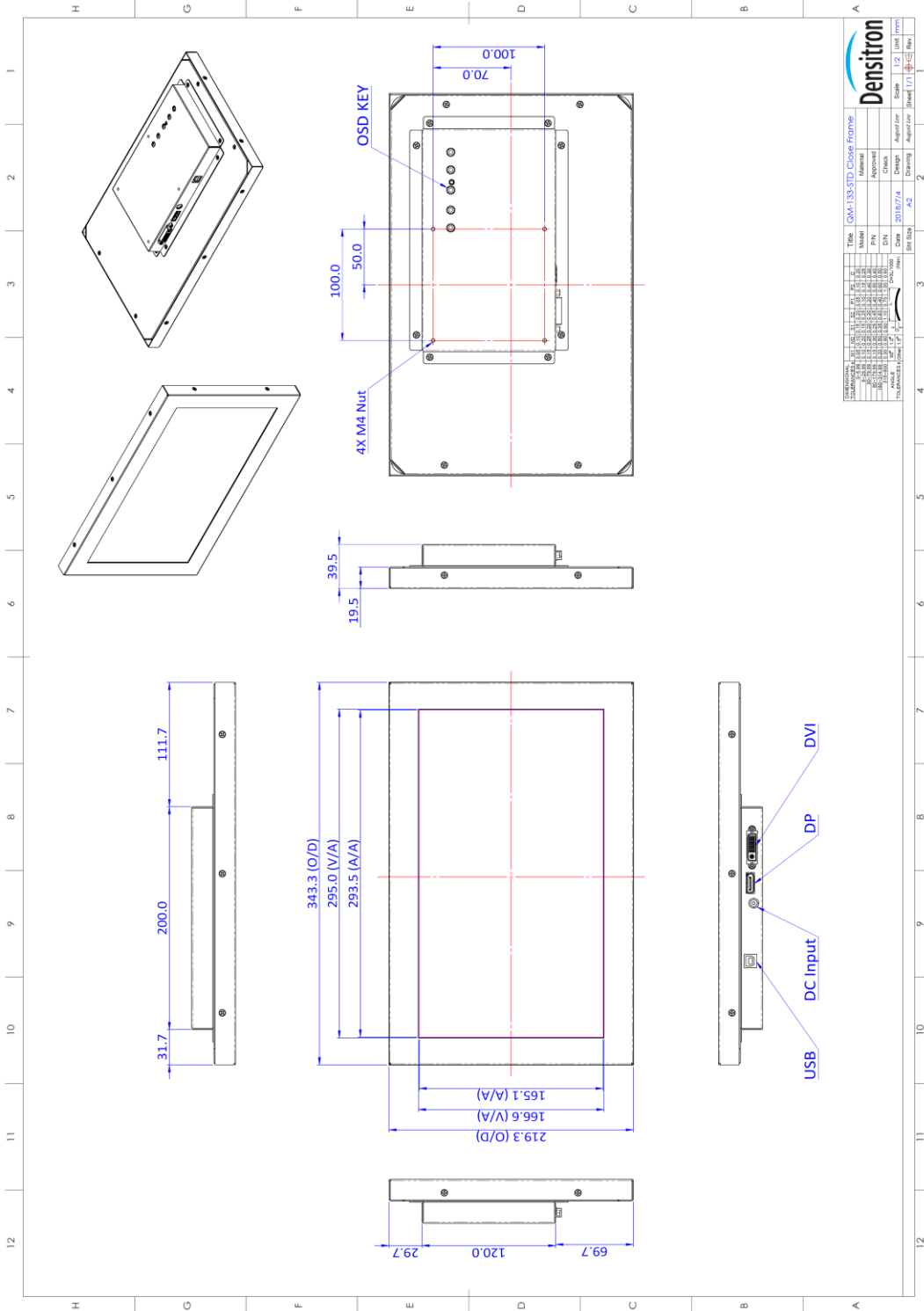
1.5 Key Button Function



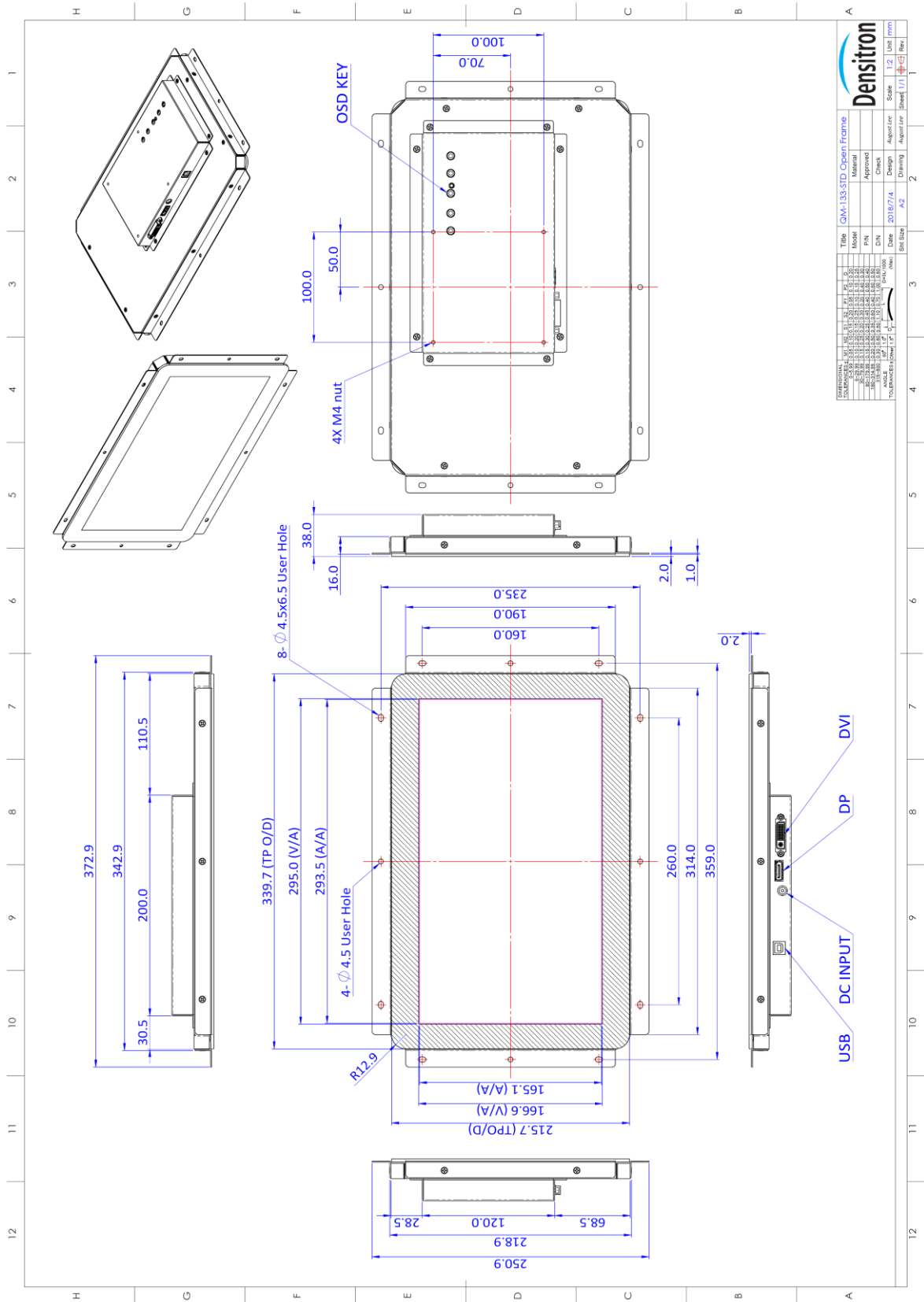
Button	Function	Description
1	Menu	Activates OSD main menu
2	Left (Up)	Left / Up arrow
3	Power	Power On / Off
4	Right (Down)	Right / Down arrow
5	Auto/Exit	Exit / Return Key
LED	LED	Blue: ON; Red; OFF

2.0 Drawings

2.1 Closed frame Panel Drawing



2.2 Open frame panel Drawing



3.0 Environmental Specification

3.1 Environmental Characteristics

Item	Remark
Operating Temperature	0°C ~ +50°C
Storage Temperature	-20°C ~ +60°C
Humidity	20~85% @ 40°C, non-condensing

4.0 Optical Characteristics

The optical characteristics are measured under stable conditions at 25°C (Room Temperature)

Item	Unit	Conditions	Min.	Typ.	Max.	Note
Central Luminance	cd/m ²		320	400	---	1, 3, 4
Viewing Angle	degree	Horizontal (Right) CR = 10 (Left)	75 75	89 89	---	3, 7
		Vertical (Upper) CR = 10 (Lower)	75 75	89 89	---	
Luminance Uniformity		5 Points	75	80	---	1, 2, 3
Contrast Ratio			600	800	-	3, 5
Response Time	msec	Rising + Falling	---	25	35	3, 6
Color / Chromaticity Coordinates	Red	Rx	0.625	0.675	0.725	3
		Ry	0.266	0.316	0.366	
	Green	Gx	0.235	0.285	0.335	
		Gy	0.605	0.655	0.705	
	Blue	Bx	0.103	0.153	0.203	
		By	0.000	0.036	0.086	
	White	Wx	0.263	0.313	0.363	
		Wy	0.279	0.329	0.379	
NTSC	%		-	90	-	

5.0 Part Number Classification

5.1 Standard Touch PMOLED Part Number

1	D	Densitron Monitor
2	M	
3	-	
4~6	0	TFT Size: 043=4.3" , 057=5.7" , 070=7" , 101=10.1"
	4	
	3	
7~8	G	SKUs: GN : Generic, BD : Button deck, 3D :3D, TP : Transparent, WT : Wide temp, DP : Dual Side, NB : Narrow Bezel, FM : Floating monitor, PT : Player Tracker
	N	
9	-	
10	O	Bezel: O : Open frame, M : Metal bezel, P : Plastic bezel, F :Flat surface K : Display kit only
11	P	Touch Screen: G : Glass, R : Resistive, S : SCT, P : PCT, D : DST, A : Acoustic, N : No need
12	1	Control Board (AD Board): ranges from 1 to 9 (a to z if needed) G: Generic X: X86 Platform Y: Arm Platform
13	R	Revision
14~15	0	Code for different configuration, ranges from 01 to 99 (a to z if needed)
	1	